

SPARE PART SIMATIC FLAT PANEL 15T 15 INCH TOUCH TFT-DISPLAY WITH 1024X768 PIXEL RESOLUTION FOR 24V DC AND 120/240V AC VGA, DVI-D INTERFACE INCL. VGA-CABLE 1,8M

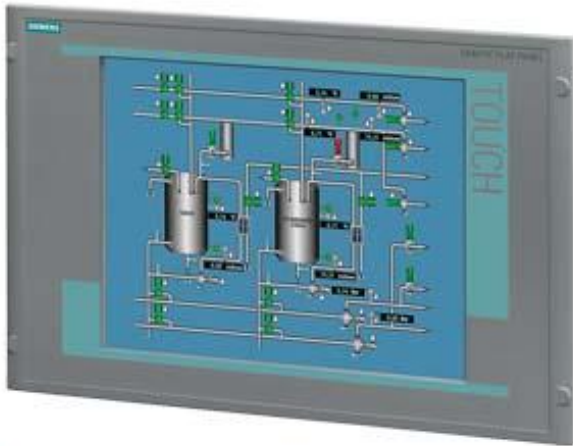


Figure similar

| Display | |
|---------------------------------------|---------------------------------|
| Design of display | TFT |
| Screen diagonal | 15 in |
| Viewing angle | 100° x 90° (min) |
| On Screen Display (OSD) configuration | Yes |
| Number of colors | 16 000 000; 16.2 million |
| Resolution (pixels) | |
| • Horizontal image resolution | 1 024 Pixel |
| • Vertical image resolution | 768 Pixel |
| General features | |
| • Brightness/contrast | > 260 cd/m ² / 350:1 |
| Control elements | |
| Input device | |
| • Integrated mouse cursor control | No |
| Keyboard fonts | |
| • Function keys | |
| — Number of function keys | 0 |

| Installation type/mounting | |
|--|---|
| Rack mounting | Yes |
| VESA mounting | No |
| Supply voltage | |
| Type of supply voltage | AC/DC |
| permissible range, lower limit (DC) | 19.2 V |
| permissible range, upper limit (DC) | 28.8 V |
| permissible range, lower limit (AC) | 90 V |
| permissible range, upper limit (AC) | 264 V |
| Interfaces | |
| Video interfaces | |
| <ul style="list-style-type: none"> analog video signal (VGA) | Yes |
| Degree and class of protection | |
| IP54 at front | Yes; For screw mounting in 19" rack |
| IP65 at front | Yes; if mounted with the supplied latch fasteners |
| Standards, approvals, certificates | |
| UL approval | Yes |
| EAC (formerly Gost-R) | No |
| Marine approval | |
| <ul style="list-style-type: none"> Germanischer Lloyd (GL) American Bureau of Shipping (ABS) Bureau Veritas (BV) Det Norske Veritas (DNV) Lloyds Register of Shipping (LRS) | Yes; Optional Yes; Optional Yes; Optional Yes; Optional Yes; Optional |
| Ambient conditions | |
| Ambient temperature during operation | |
| <ul style="list-style-type: none"> min. max. | 0 °C 50 °C |
| Dimensions | |
| Width of the housing front | 483 mm |
| Height of housing front | 310 mm |
| Mounting cutout, width | 450 mm |
| Mounting cutout, height | 290 mm |
| Overall depth | 55 mm |
| last modified: | 04/24/2017 |